

# gMCS News

HELLO

*December*

**Early Dismissal at 12pm  
December 13**

**No School  
Winter Break Holiday  
December 23 - January 01**



Gettysburg Montessori Charter School  
(717) 334-1120 <https://www.gettysburgmontessoricharter.org>





# Stay up to date

December 2024

## Annual Public Notice

To access our annual public notice please [click here](#).

## Lunch Menu

[VIEW MENU](#)

We're excited to invite you to our upcoming events! Please RSVP for Preschool PJ Storytime or join us for our 25.26 Kindergarten Open House to explore our school, meet the teachers, and learn more about our programs. We look forward to seeing you there. [Click Here](#)



**GMCS PRESENTS**

**HOLIDAY  
CONCERT**

**DATE AND TIME :**

**DECEMBER 10, 2024 @ 6PM**

**LOCATION :**

**GETTYSBURG AREA MIDDLE SCHOOL**

December 11, 2024

MAJESTIC THEATER TRIP

*Christmas*

CAROL



**GMCS students from 1st through 6th grades will be going to the Majestic Theater to see the Christmas Carol.**

**Please be on the lookout for a permission slip to be sent home with your student.**

# DONATIONS NEEDED



*GMCS is accepting donations for local nursing homes.  
Items will be collected through December 13, 2024.  
Donation box is in the lobby.*

*Help spread Joy throughout this season.*

-tissue paper and construction

-paper for crafts

-picture books

-dot to dot books

-body wash

-lotion

-deodorant

-hairbrush

-table top organizer

-pens

-wordfinds

-crayons

-colored pencils

-ChapStick

-glue sticks

-bottle glue for crafts



**[https://www.amazon.com/hz/wishlist/ls/T584JLCUIVPB?ref=wl\\_share](https://www.amazon.com/hz/wishlist/ls/T584JLCUIVPB?ref=wl_share)**

# TREE PLANTING

We want to extend our heartfelt thanks for your support with the tree planting! It was truly a meaningful experience, and we appreciate the time and effort each of you dedicated to making it possible. Planting trees not only benefits the environment but also creates lasting memories for our GMCS family.

Here are the tree varieties we planted together:

- American Chestnut, American Plum, American Sycamore
- Basswood, Black Cherry, Black Locust, Black Walnut, Blackgum
- Boxelder, Dogwood, Silky Dogwood, Elderberry, Hackberry
- Bitternut Hickory, Mockernut Hickory, Honey Locust, Kentucky Coffee Tree
- Maple, Ninebark, Chinquapin Oak, Red Oak, Scarlet Oak, Swamp White Oak, White Oak

We look forward to watching them grow together!





# Holiday Shop

*December 11 to 18, 2024*

The Holiday Shop will be held from December 11-18. Gifts range from \$1-\$5. In order for students to shop for family members, use the student envelope to indicate who the child should shop for and include money (cash only) for gifts.

Please do not send more than \$50 with your student. Please send the envelope with your child on their scheduled day of shopping. Any profit made goes towards student activities.

If you should have any questions, please contact the front office.

Thank you,  
The GMCS Holiday Shop Crew



# Holiday Shop Class Schedules



## **Wednesday, December 11, 2024**

Mrs. Fleurant & Mrs. Harmon Class 8:45 – 10:35

## **Thursday, December 12, 2024**

Mrs. Lawrence 10:05 – 10:45am

Mrs. Rodgers 1:00pm – 1:40pm

Mrs. Bechtel 1:45pm – 2:25

## **Friday, December 13, 2024**

Mrs. Thomas 9:45am – 10:30am

## **Monday, December 16, 2024**

Mrs. Raylock 10:00am – 10:45am

Mrs. Sauter 1:00pm – 1:40pm

Mrs. Dohler 1:45pm – 2:25pm

## **Tuesday, December 17, 2024**

Mrs. Gulden 1:00pm – 1:40pm

Mrs. Roush 1:45pm – 2:25

## **Wednesday, December 18, 2024**

Makeup date

Makeup time for students who missed scheduled day





# GMCS FID

(Flexible Instruction Day)



It is that time of year again when we need to prepare for Flexible Instruction Days due to weather emergencies. It is expected that all students will attend asynchronously on FID unless technology/internet access is unavailable. Students are to follow the FID schedule below and complete the assignments posted in Google classroom. If technology is unavailable, students will be expected to complete the FID learning packet provided by their teacher.

## SCHEDULE FOR FID DAYS

**10:00** All Students must be logged into Google Classroom to view the morning announcements and participate in asynchronous morning meetings/discussion boards.

**10:00 - 12:00** Students work on assignments posted in Google Classroom or on paper packets issued by their teachers.

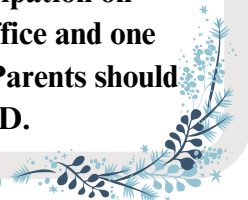
**12:00 -12:30** Lunch and Movement Break

**12:30 - 3:00** Students work on assignments posted in Google Classroom or on paper packets issued by their teachers.

## FID LEARNING PACKETS AND ATTENDANCE

Prior to a FID your teacher(s) will be sending five days worth of instruction home as needed in the event you are unable to attend school asynchronously via Google classroom on a FID. It is important that students do not complete FID packets prior to a FID and that the packet is available for students in the event technology is unavailable. When technology is unavailable, students must complete ALL assignments for each day at home to receive credit for attending that day. Students will be marked absent until a written notification of their participation/attendance in FID and a COMPLETED packet is returned to school the first day following an FID to verify their participation in the FID. If a student was absent on a FID they will be marked unexcused until GMCS receives proper excuses from parents.

If a hotspot is needed for participation on FID days, please contact the office and one will be issued to your student. Parents should contact the school prior to a FID.





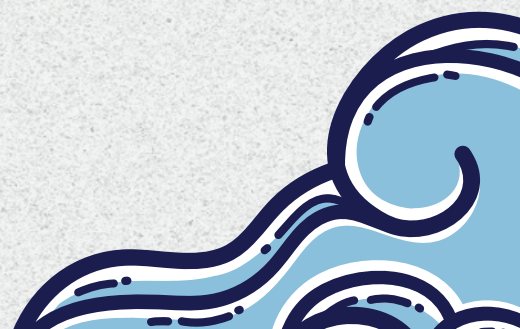
---

# Recess in Cold Weather

---

GMCS uses the following general guidelines for decision making related to recess:

- Regular outdoor recess will be held when outside air temperature and/or wind chill is 25° (F) or greater. The presence of rain or snowfall can influence this decision.
- Indoor recess will be held when outside air temperature and/or wind chill is lower than 25° (F).
- Whenever students are sent outside in cold temperatures, building staff watch for individual children who are not wearing appropriate clothing and may be at risk. In the event that a child does not have access to clothing necessary for cold temps or snow, GMCS is here to help! Just let us know



# DELAYS AND CLOSING



Please check our website for weather delays & closing information at [gettysburgmontessoricharter.org](http://gettysburgmontessoricharter.org)  
Emails and text alerts will be sent and information is posted on WGAL.

Contact

[info@gettysburgmontessoricharter.org](mailto:info@gettysburgmontessoricharter.org)  
if you are not receiving alerts.

# WINTER SPIRIT WEEK

## December Newsletter

### Holiday homeroom contest!

Each homeroom will decorate the outside of their classroom doors for the holidays. The winner will be announced 12/20!

**DECEMBER 11, 2024**

Dress to impress for grades 1st-6th  
Kindergarten only -  
Favorite holiday PJ's

**DECEMBER 13, 2024**

Holiday Character Day  
(Grinch, Santa, elf, Olaf,  
snowman, reindeer)

**DECEMBER 17, 2024**

Holly Jolly HAT DAY

**DECEMBER 19, 2024**

Holiday Character Day  
(Grinch, Santa, elf, Olaf,  
snowman, reindeer)

**DECEMBER 20, 2024**

Holiday PJ Party!  
Wear your coziest PJs  
( school - appropriate )

**DECEMBER 12, 2024**

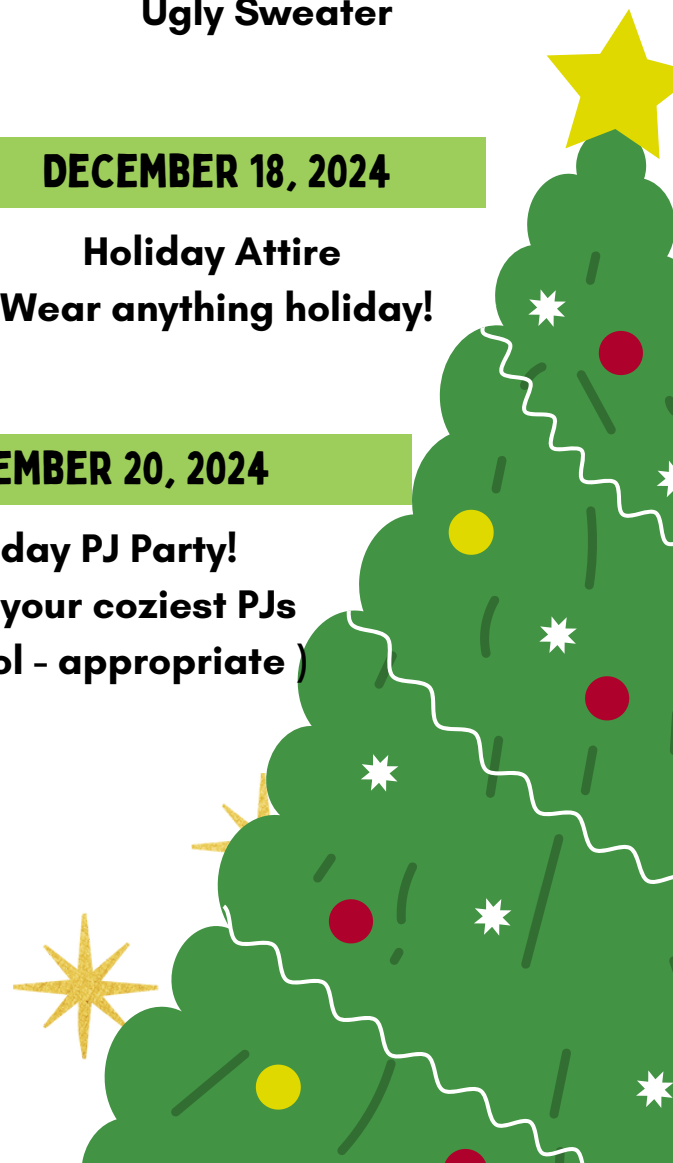
Wear holiday hats, headbands,  
scarves, earrings, socks!

**DECEMBER 16, 2024**

Ugly Sweater

**DECEMBER 18, 2024**

Holiday Attire  
Wear anything holiday!





**GETTYSBURG  
MONTESSORI  
CHARTER SCHOOL**  
*Inspiring a Love of Learning*

# Look Ahead January

**No School  
January 20, 2025 in  
observance of  
MLK Jr. Day**





# Save the Date

Storytime for Pre-K

January 22, 2024

100th Day of School

January 30, 2024 Tentative

National School Choice Spirit Week

January 22 to January 26, 2024

Report Cards posted online

January 24, 2024



# HAPPY HOLIDAYS

We wish our families a  
wonderful and safe  
Holiday Season.

